

**Forest of Bowland Area of Outstanding Natural Beauty Joint Advisory Committee**

**Wednesday, 18th April, 2012 at 2.00 pm in Foster Suite, Hornby Community Resource Centre, The Institute**

**Supplementary Agenda**

We are now able to enclose, for consideration at the next meeting of the Forest of Bowland Area of Outstanding Natural Beauty Joint Advisory Committee on Wednesday, 18th April, 2012, the following information which was unavailable when the agenda was despatched.

**Part 1 (Open to Press and Public)**

**No. Item**

**Broadband for the Rural North - Presentation from Barry Forde**

**Lancashire Witches 400th Anniversary activities during 2012 - Presentation from Mike Williams, Pendle Borough Council**

I M Fisher  
County Secretary and Solicitor

County Hall  
Preston





# Broadband for the Rural North Ltd

Barry Forde - CEO

B.Forde@b4rn.org.uk

[www.b4rn.org.uk](http://www.b4rn.org.uk)

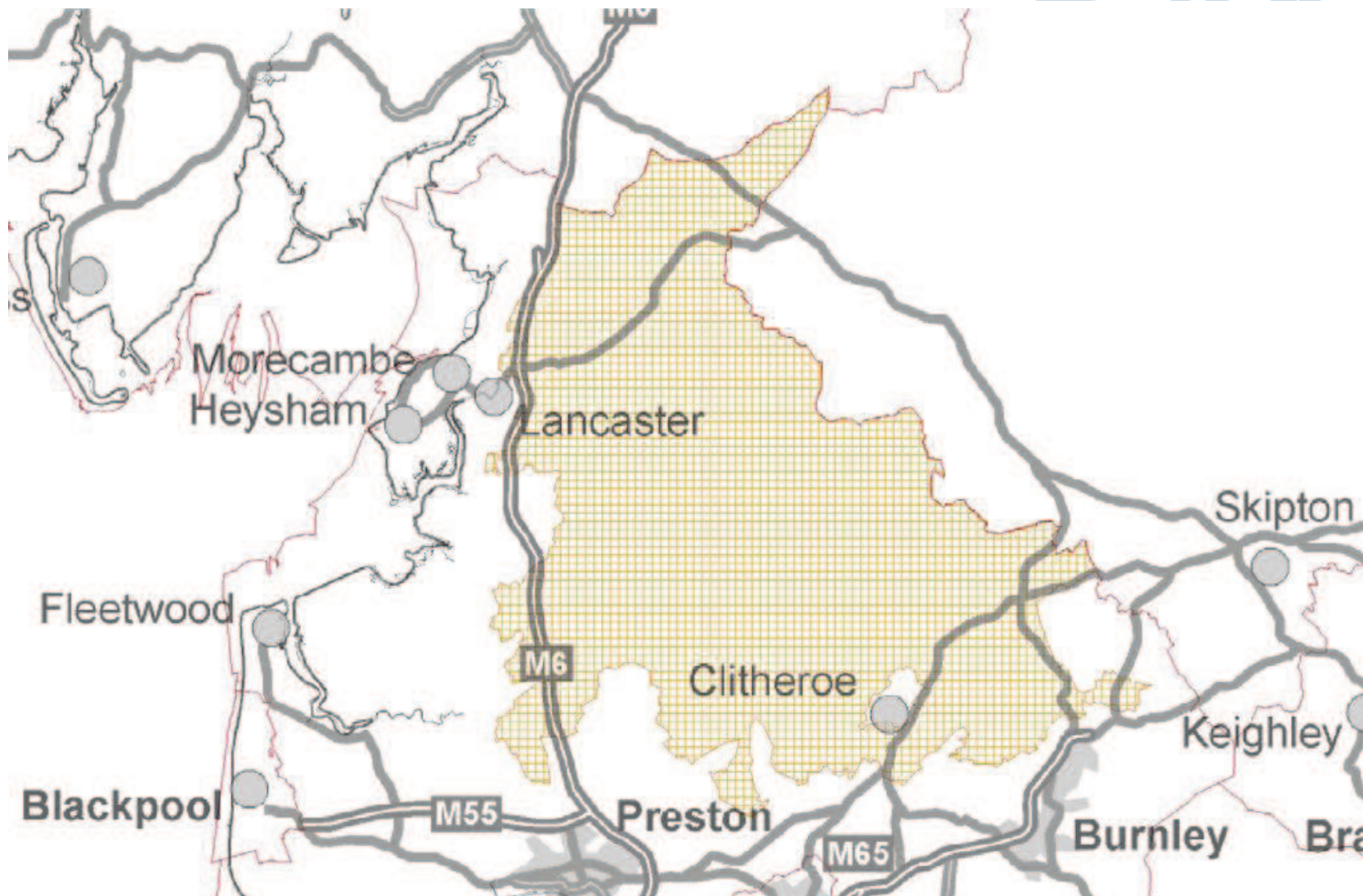


# What is the problem?



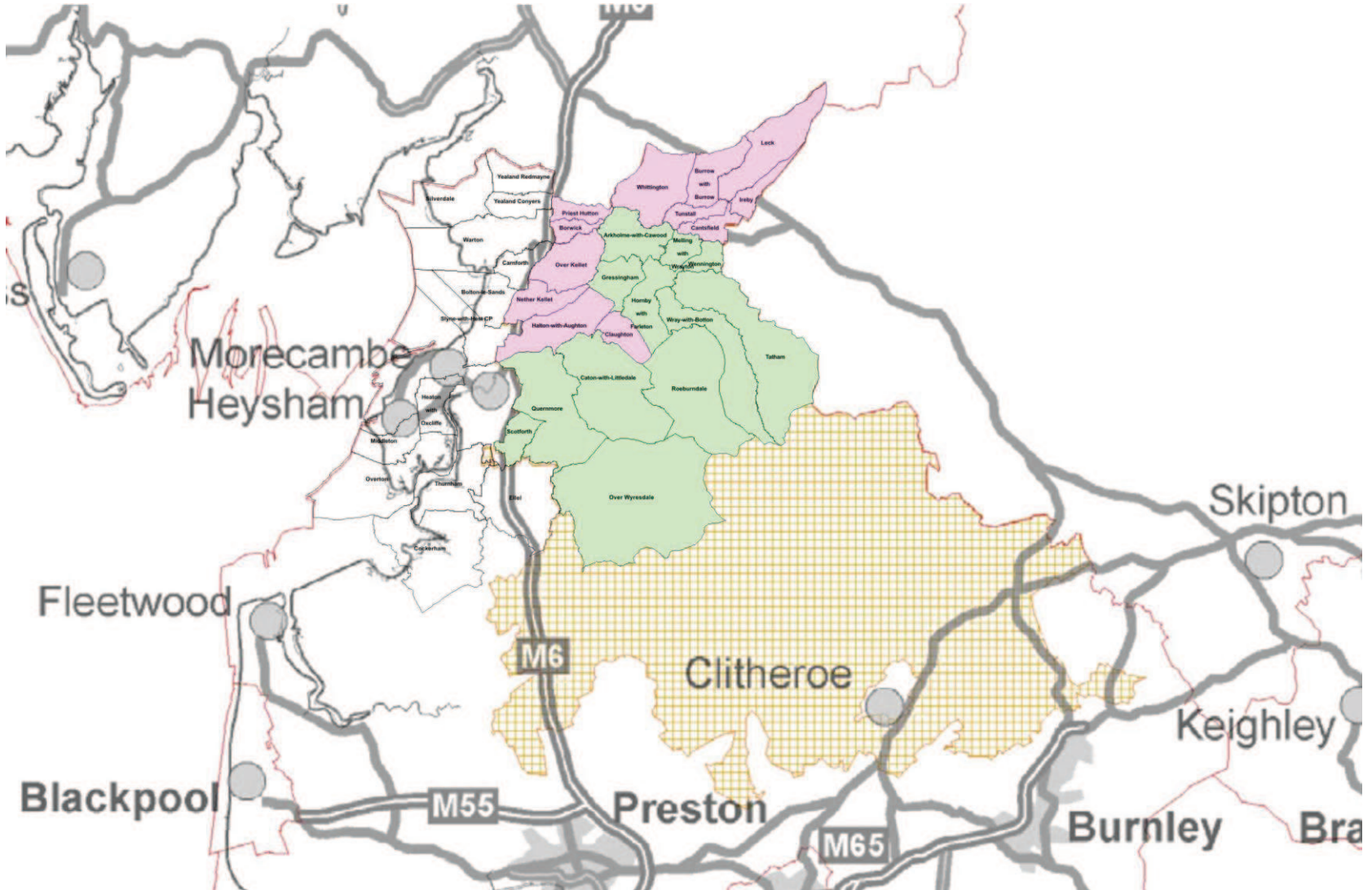
- Broadband in rural areas is poor because:-
  - Few telephone exchanges
  - Each serves a large area
  - long lines to properties
  - Speed directly proportional to line length
  - If line long then slow broadband, a GROT spot
  - If line very long then no signal at all, a NOT spot
- Upland areas sparsely populated
- So particularly badly affected

# Upland Area - Lancashire





# B4RN FTTH Area



AONB Workshop 18th April 2012

# Cost



- Detailed Network design completed
- Build cost is £1.86M (£1090/property)
  - 100% of properties ~1700 (keeps growing)
  - No one too far or too expensive
  - It's a community project
- £0.7M = labour costs
  - This is work that can be done by community
- £1.1M = materials
  - This includes work we cannot do ourselves

# Time Line

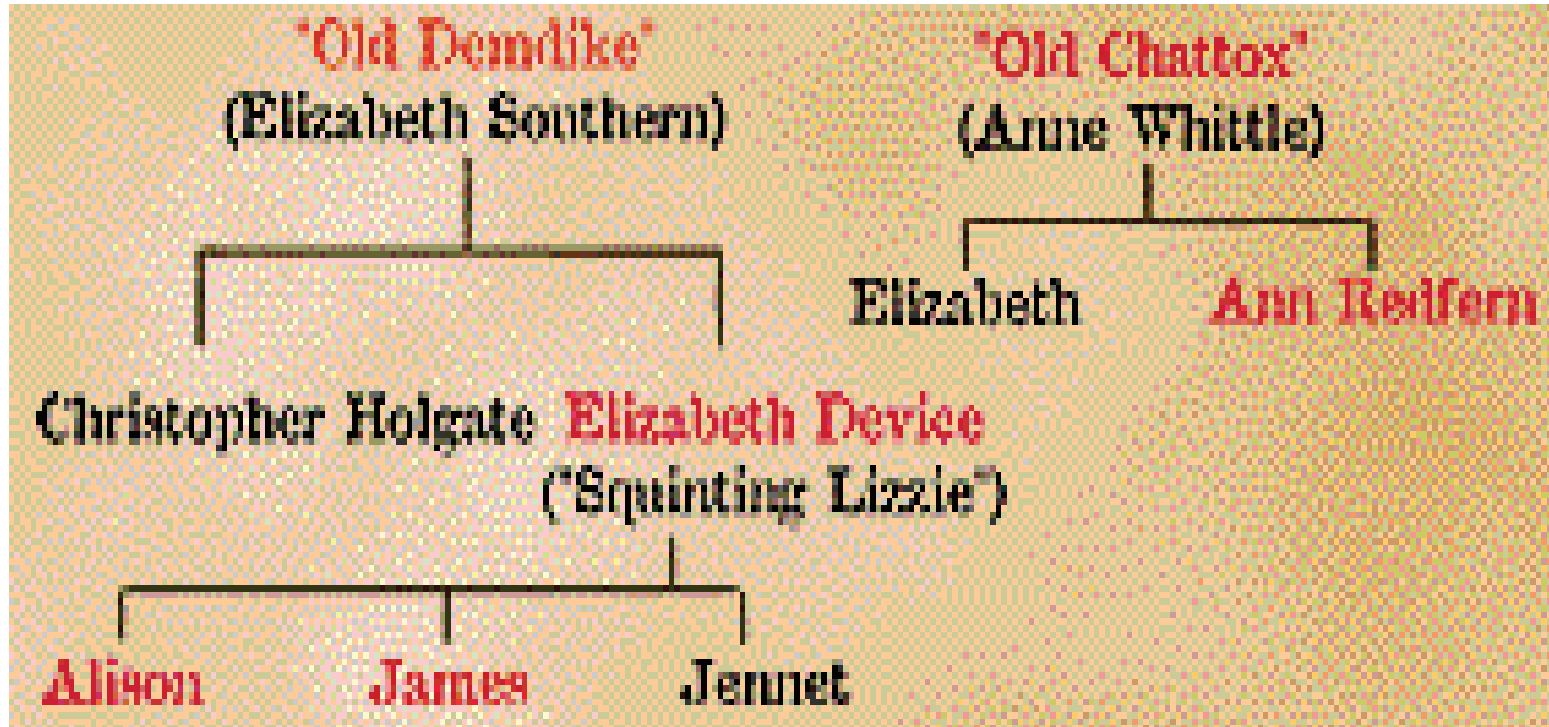


- Launched shares issue 15<sup>th</sup> Dec
- Hit trigger point target by 29<sup>th</sup> Feb
- Ordered materials to do first 13 routes which connect the five village nodes together
- Dig launch 31<sup>st</sup> March
- Actual digging getting underway now
- Core 13 routes = 48Km of duct
- Another 37Km for spurs to reach 407 props
- Target completion July
- Live service from 1<sup>st</sup> July
- Now into second fund raising to do rest of job



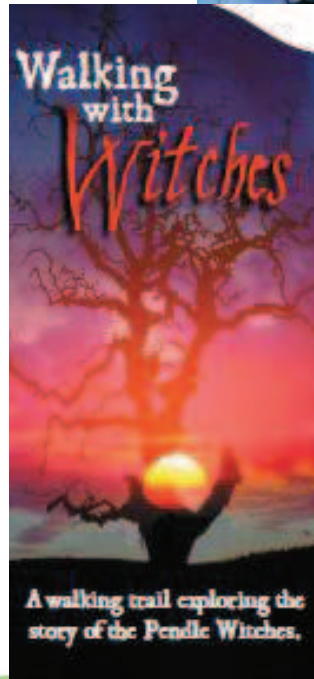
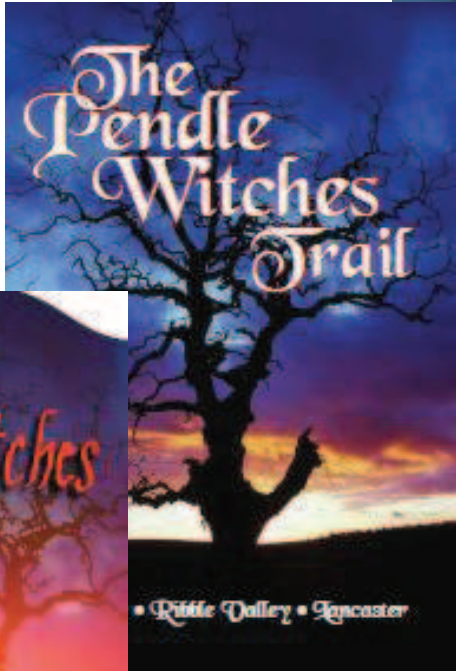
# Pendle Witches 400<sup>th</sup> Anniversary

- Introduction – a potted history



# Pendle Witches 400<sup>th</sup> Anniversary

- Commemorating the history AND marketing the area
- Existing tourism attractions
- New attractions
- Events



Putting people first... **Pendle**

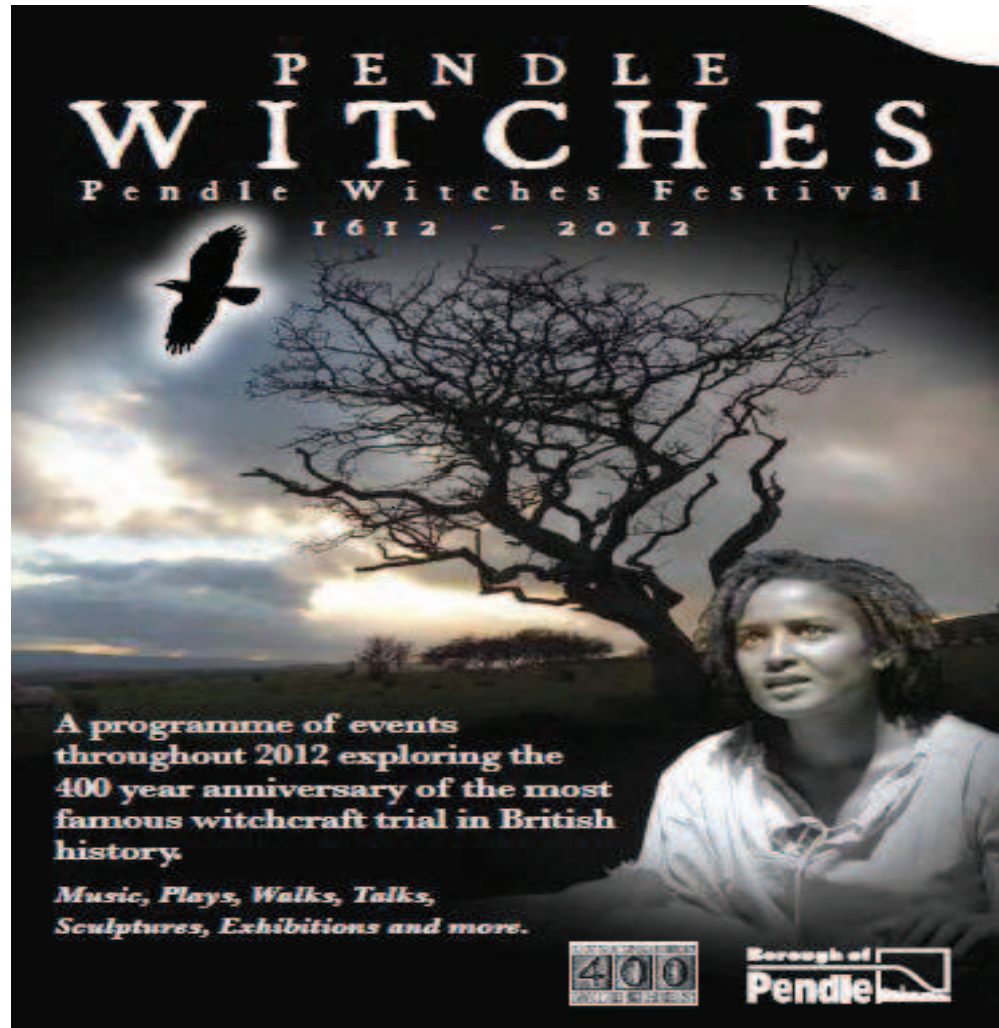
# Pendle Witches 400<sup>th</sup> Anniversary

- Commemorating the history AND marketing the area
- Existing tourism attractions
- **New attractions**  
**Sculpture Trail**  
**LW400**
- Events



# Pendle Witches 400<sup>th</sup> Anniversary

- Commemorating the history AND marketing the area
- Existing tourism attractions
- New attractions
- **Events**





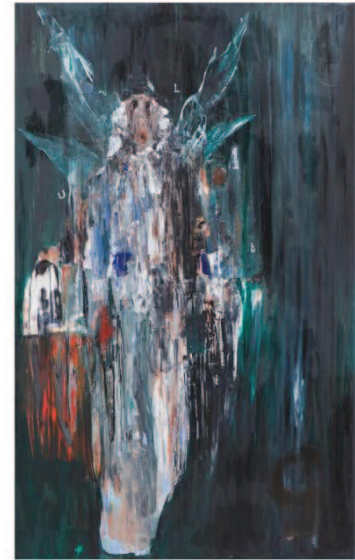
# Pendle Witches 400<sup>th</sup> Anniversary

## Events

- Guided Walks
- Talks
- Book Launches
- Plays
- Bus tours
- Exhibitions & Arts

## Big events

- Folklore Festival  
15<sup>th</sup> – 18<sup>th</sup> June
- Barley Event  
18<sup>th</sup> August



Putting people first...

# Pendle Witches 400<sup>th</sup> Anniversary

## Partners

- Events partners
- Promotional partners
- Cross promotion

## Legacy

- Lessons from history
- Greater awareness of the area
- Greater media coverage
- More visitors





The End

Visitors Guide 2012 - 2013

# Discover Pendle

NATURE - CULTURE - EVENTS - ATTRACTIONS - SHOPPING - ACCOMMODATION

## THE WITCHES ARE 400!

Join us and experience the Pendle Witches 400th Anniversary Festival



**PLUS...**  
Pendle R&B festival, Titanic 100th anniversary & much, much more...

Borough of Pendle

Putting people first... **Borough of Pendle**



